



Osceola Electric Cooperative

A Touchstone Energy® Cooperative



The power of human connections®

July 2023

CONTACT US

Office:

1102 Egret Drive
Sibley, IA 51249

Office Hours:

Monday-Friday
7:30 am to 4:00 pm

Phone:

Local: 712-754-2519
Toll Free: 888-754-2519

On evenings, weekends or holidays an answering service will accept power outage or emergency type calls only.

Online:

osceolaelectric.com

FIND YOUR ACCOUNT NUMBER

Three account numbers are hidden within the newsletter. Notify us if you find your number and we'll credit your account \$5. Confirm your account number on the top of your statement. Account numbers must be yours to claim.

OEC RECIPES

Submit your favorite Snack recipes for consideration to be printed in our September newsletter.

Submission deadline is August 20. Printed recipes are worth a \$10 bill credit.

Community Investment



At Osceola Electric Cooperative we believe in community and are happy to contribute to worthy causes around the county.

A portion of these donations came from CoBank's Sharing Success program. CoBank is a national non-profit cooperative bank owned by the rural American cooperatives it services. In 2012 CoBank established a program that doubles the contributions of it's customers to the charitable organizations and causes they care about most.



This year Osceola Electric Cooperative Board of Directors selected Bright Beginnings Daycare, S-O Athletic Boosters, Osceola County Ag Pavilion, and Osceola County Fair Board as the recipients. These nonprofit organizations offer valuable services to members of **25471** OEC and make Osceola County a great place to live, work and play!



Pictured is staff member, Kelly Slagter with a Bright Beginnings crew, General Manager, Jeff Ten Napel with the S-O Booster Club, and Director, Steve Voss with the Osceola County Ag Pavilion. Not pictured the Osceola County Fair Board.

5 Simple Words Can Keep Linemen Safe

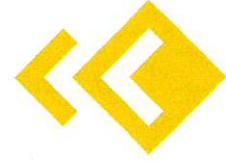
If you're driving on Iowa roadways, what should you do if you approach a utility vehicle stopped on the shoulder with its flashing lights activated? According to the state's Move Over or Slow Down law, motorists must slow down or move over, or you could be fined \$100 for not complying.

Iowa has had a "Move Over or Slow Down" law on the books since 2002; the law simply states that a motorist must change lanes or slow down when approaching a stationary emergency, tow or

maintenance vehicle that has its flashing lights activated.

As a licensed Iowa driver, you are required to move over or slow down when approaching an emergency or maintenance utility vehicle on the side of the road that has its flashing lights activated. As a safety best practice, we encourage you to slow down AND move over every time you approach a vehicle stopped on the side of the road.

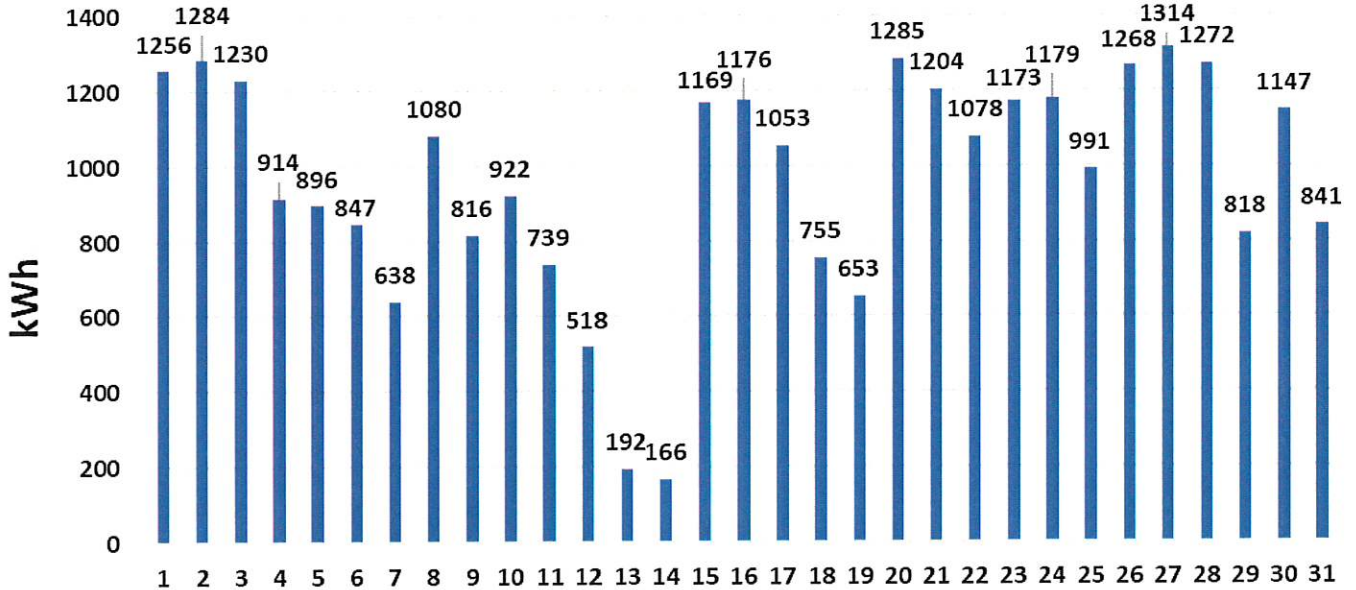
When you're behind the wheel, keep your eyes on the road and



MOVE OVER SLOW DOWN

make room for maintenance workers who are on the side of the road. Their jobs are dangerous enough already.

May 2023 Solar Park Production



Operating Statistics for May 2023

	<u>2022</u>	<u>2023</u>
Billed consumers, farm.....	1,139	1,149
Billed consumers, non-farm and others	109	121
Kilowatts sold, farm	2,208,166	2,205,522
Kilowatts sold, non-farm and others	2,183,157	4,689,905
Average consumption, farm.....	1,939	1,920
Average consumption, non-farm and others	20,029	38,760
Average statement, farm	\$219.93	\$221.59
Average statement, non-farm and others	\$1,916.68	\$3,402.67
Total minimum bills.....	17	29
Outage time per consumer—minutes	23	0
Energy efficiency added per KWH.....		0.00022
Annual meeting date	March 2024	

Manager's Report



**Jeff Ten Napel,
General Manager**

FEMA Mitigation Projects

Osceola Electric Cooperative has been working with Stanley Consultants, an engineering firm from Muscatine, Iowa on two mitigation projects since summer of 2019. Both projects have been approved by Iowa Homeland Security and FEMA.

OEC members may have seen activity throughout the county. Crews have been performing staking activities and framing poles since June. Construction will begin in mid-July.

A total of 52.8 miles will be rebuilt, overhead lines will have shorter spans and larger poles with aluminum conductor. Townships affected and miles per Township:

Allison.....	1-phase 7.00 miles
Allison.....	3-phase 4.45 miles
Baker.....	1-phase 3.40 miles
Baker.....	3-phase 2.00 miles
Harrison.....	1-phase 17.17 miles
Harrison.....	3-phase 7.76 miles
Ocheyedan.....	1-phase 1.00 mile
Ocheyedan.....	3-phase 3.00 miles
East Holman.....	1-phase 1.50 miles
East Holman.....	3-phase 2.50 miles
Fairview.....	1-phase 1.00 mile
West Holman.....	1-phase .2 miles
Viola.....	1-phase 1.85 miles

Overhead vs Underground Construction

1-phase overhead.....	31.70 miles
1-phase underground.....	1.40 miles
3-phase overhead.....	10.94 miles
3-phase underground.....	8.77 miles

Contractors are procured. You'll see Highline Construction crews from Paynesville, Minnesota and Loosbrock Digging crews from Lismore, Minnesota. Both contractors have completed work for OEC in the past. Projects must be completed by September of 2024. Total costs for both projects equal \$4.59 million. Bids came in higher due to material costs, single-phase miles averaged in the lower sixty thousand dollars per mile, three-phase miles averaged close to one hundred and fifty thousand dollars a mile. Overhead costs are lowering the averages in both single and three-phase miles.

OEC and City of Bigelow

The City of Bigelow approached OEC to visit about options for OEC serving City of Bigelow customers. As talks progressed OEC acquired nine of the existing City of Bigelow customers in Iowa. OEC is working with both Nobles County REC of Minnesota and City of Bigelow for the transfer of overhead lines. Having three utilities and two states involved has delayed the process. We had to wait for both the Iowa Utilities Board (has given approval), Consumer Advocate Office (has no objections) and Public Utility Commission of Minnesota to approve. We look forward to welcoming those Iowa services as members of OEC in the near future.

Member Appreciation Supper

OEC will be holding our 1st Annual Member Appreciation Supper – August 22nd from 5:00 pm to 7:00 pm. Hamburgers, potato salad and baked beans will be served at our office in Sibley. Drawings for bill credits and door prizes will be held every 30 minutes. The 313 Club of Melvin will be grilling. Plan to attend and visit with Directors and Staff.

Energy Efficiency Tip of the Month

Summer is a prime opportunity to enjoy the great outdoors. To reduce home energy use, avoid using your oven and use a grill instead. Not only will cooking outdoors eliminate the electricity used to power the stove, but it will also avoid raising the temperature inside your home, reducing the need for air conditioning or cooling.

You can also avoid using the oven with tasty no-bake recipes. Get creative in the kitchen (or the backyard) and find new ways to save energy!

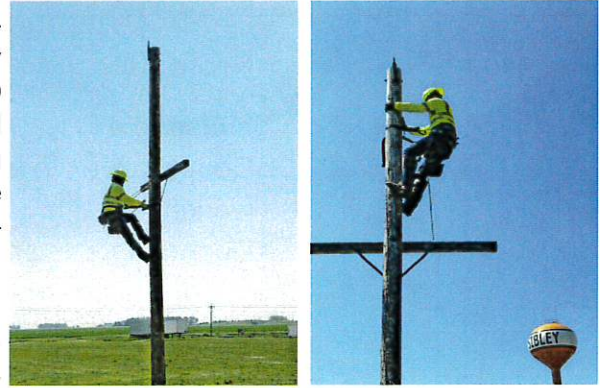
Source: Dept. of Energy



Staff Safety Training

Osceola Electric Cooperative staff participate in safety training each month. 27170 The June topics included emergency training, climbing review, bucket truck rescue training, and a table top security exercise.

Each year OEC linemen participate in a climbing certification exercise. This consists of climbing the pole, crossing over the cross arm, circling the pole, then climbing down the pole. This exercise refreshes their memory on the steps to safely climb a pole when the need arises. 11180



GEARED FOR SAFETY

Electric co-op lineworkers wear special gear to help them stay safe on the job. Can you match the descriptions below to the correct safety equipment? Use the answer key to check your work!



1. These provide extra protection while lineworkers work with heavy materials that could fall near their feet.

2. This material keeps lineworkers safe from electrical hazards.

3. This protects lineworkers from head injuries and falling debris.

4. These insulated protectors keep lineworkers safe from electrical shock while working on power lines.

5. These keep debris away from lineworkers' eyes while on the job.

6. This is a handy piece of safety gear that holds tools and other equipment.

Answers: 1. Work Boots 2. Flame-Resistant Clothing 3. Hard Hat 4. Insulated Gloves 5. Safety Goggles 6. Equipment Belt