



Osceola Electric Cooperative

A Touchstone Energy® Cooperative 
The power of human connections®

June 2025

Contact Us

Office:
1102 Egret Drive
P.O. Box 127
Sibley, IA 51249

Office Hours:
Monday-Friday
7:30 am to 4:00 pm

Phone:
Local: 712-754-2519
Toll Free: 888-754-2519

On evenings, weekends or holidays an answering service will accept power outage or emergency type calls only.

Online:
osceolaelectric.com

Take the Quiz

Read through the newsletter and submit the quiz on the back for a chance to win a \$10 bill credit.

OEC Recipes

Submit your favorite Fajita Recipe for consideration to be printed in our August Newsletter. Submission deadline is July 20. Printed recipes are worth \$10 bill credit.

Meet our 2025 Scholarship Recipients

At Osceola Electric Cooperative, our commitment to community goes beyond providing reliable electricity—it means investing in the future of our members and their families.

In partnership with Basin Electric Power Cooperative and L&O Power Cooperative we're proud to support youth in their pursuit of higher education. OEC offers 5 scholarships to students of our members enrolled or planning to enroll in a full time graduate or undergraduate course of study at an accredited

2-year or 4-year college, university or vocational school.

With great honor we announce the 2025 Scholarship winners. These students represent the values that drive our cooperative: hard work, leadership, and dedication to service. We're honored to support them as they take the next step toward bright and promising futures.

Thank you to all the student applicants and our scholarship judges!

Congratulations and best wishes to the entire Class of 2025!



Avery Konz



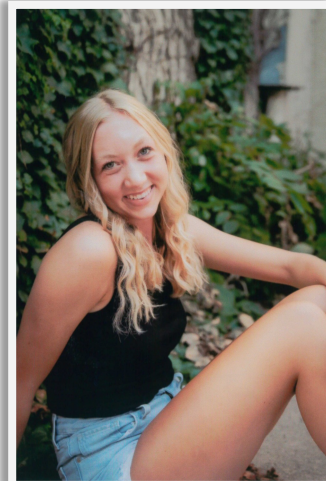
Kaidence Pahl



Alexis Hulstein



Marshall Schiphoff



Abigail Douma

**In observation of
Independence Day
Osceola Electric will
be closed July 4.**

Nominate a Local Volunteer by June 30!

Do you know someone in our community who deserves to be recognized for making a difference? Nominate them for the Shine the Light contest by June 30 and they could win \$3,000 for their local charity or nonprofit.

"We're really excited to participate in this statewide effort to celebrate our cooperative commitment to community," remarked Jeff TenNapel, General Manager. "There are so many incredible volunteers throughout our service area who deserve to be recognized."

Sponsored by the Touchstone Energy Cooperatives of Iowa, this is the fifth year of the Shine the Light contest, which celebrates the people who make our communities better. Three winners will be announced in September and each will receive a \$3,000 donation for their charity or nonprofit. The winners will also be



featured in the September issue of *Iowa Electric Cooperative Living* magazine and on social media.

How to Nominate

Member-consumers and employees of Iowa's electric cooperatives are eligible to nominate local volunteers. If you receive

electricity from Osceola Electric Cooperative you're a co-op member-consumer and we encourage you to nominate someone who is making a positive impact in the community. The volunteer being nominated does not need to be a co-op member-consumer. Minors may be nominated with consent from their parents or legal guardians. Nominees from previous years can be nominated again for another chance to win.

Go to www.IowaShineTheLight.com by June 30 to make a nomination and to review the contest rules. Nominators will need to provide basic contact information and answer this question in 500 words or less: *How has your nominee made a difference in the community and how might their local charity/nonprofit use the \$3,000 donation?*

Help us shine the light on our community volunteers; make a nomination by June 30!

Keep Energy Bill in Check While Kids Are Home

When school's out, your home's energy use might go up—more lights on, more electronics running and the air conditioner working harder. Here's how to keep your energy use from skyrocketing while the kids are home for summer:

- Set rules for electronics use. Limit screen time for TVs, gaming consoles and computers. Encourage outdoor activities or reading instead of leaving devices running all day.
- Adjust the thermostat. Set your air conditioner a few degrees higher and turn on ceiling fans when the kids are home. Closing blinds and curtains during the hottest part of
- the day can also keep the house cooler without extra a/c use.
- Unplug devices when not in use. Chargers, gaming consoles and small appliances draw power even when turned off. Plug them into a power strip and switch it off when not needed.
- Use energy-efficient lighting. If the kids leave lights on in every room, swap old bulbs for LEDs, which use less energy and last longer.
- Plan meals wisely. Avoid using the oven during the hottest hours. Opt for air fryers, microwaves or outdoor grills to reduce heat inside the home.



LOVE THE OUTDOORS? BE SAFE OUT THERE

2/3 of lightning fatalities are associated with outdoor **recreational activities**.

Pay attention to weather forecasts **before you go canoeing or boating**. Get off the open water as soon as you **hear thunder**.

Do not use generators in enclosed areas. The same goes for grills, camping stoves or other small appliances that produce carbon monoxide.

Look up for power lines while fishing or sailing.
FACT: Fishing is the most common outdoor activity associated with lightning-related deaths.

Going for a hike? If you hear thunder or see lightning, **do not seek shelter under a tree.**

Tent camping? Plan ahead, seek shelter in a hard-top vehicle or four-sided building during a storm or at the first sight of lightning.

For more information, visit: SafeElectricity.org

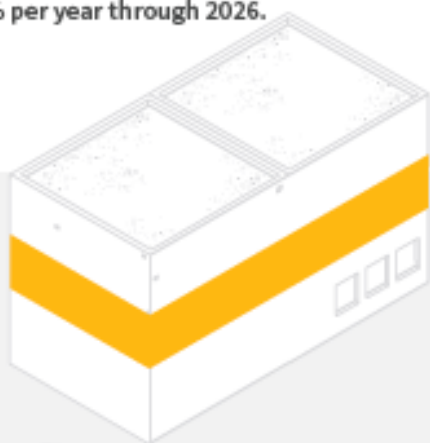
Soaring Demand

Second in a series

After decades of flat or declining electricity demand, the United States is in the midst of a boom in power use. Recent government data shows that power consumption nationwide is set to increase by at least 38 gigawatts between now and 2028. This trend would ordinarily be great news for the power industry. But government policies aimed at shutting down fossil-fuel-based generation and years-long delays in permitting and siting for new transmission lines are turning this power boon into a capacity crisis. Here are the primary demand drivers:

Electrification

Electric vehicle adoption, electrification of home heating and industrial electrification are expected to increase overall U.S. energy consumption by 1% per year through 2026.



↑
65%

Data Centers

Driven by explosions in artificial intelligence, cryptocurrency and cloud computing, total U.S. data center load is projected to increase by 65% by 2050.



Economic Growth

Residential power consumption is expected to increase by 14% to 22% through 2050 due to increases in population and steady economic growth.



Manufacturing Growth/Onshoring

New, expanding and “onshored/reshored” manufacturing capacity driven by federal incentives is expected to increase industrial demand by 13,000 GWh per year.

Key products: EVs, batteries, semiconductors, solar power components

Total Demand

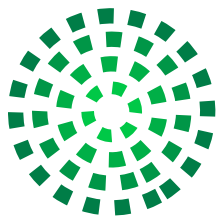
Analysts predicted in 2023 that U.S. peak demand will increase by at least 38 GW over the next five years, nearly double the growth rate predicted in 2022.

2027

Forecast
835 GW

Forecast
852 GW

2028



Energy Efficiency Tip of the Month

Take advantage of the warmer weather to reduce home energy use. Avoid using your oven and use a grill instead. Not only will cooking outdoors eliminate the electricity used to power the stove, but it will also avoid raising the temperature inside your home, reducing the need for additional air conditioning. You can also avoid using the oven with tasty no-bake recipes. Get creative in the kitchen and explore new ways to save energy!

Source: [energy.gov](https://www.energy.gov)



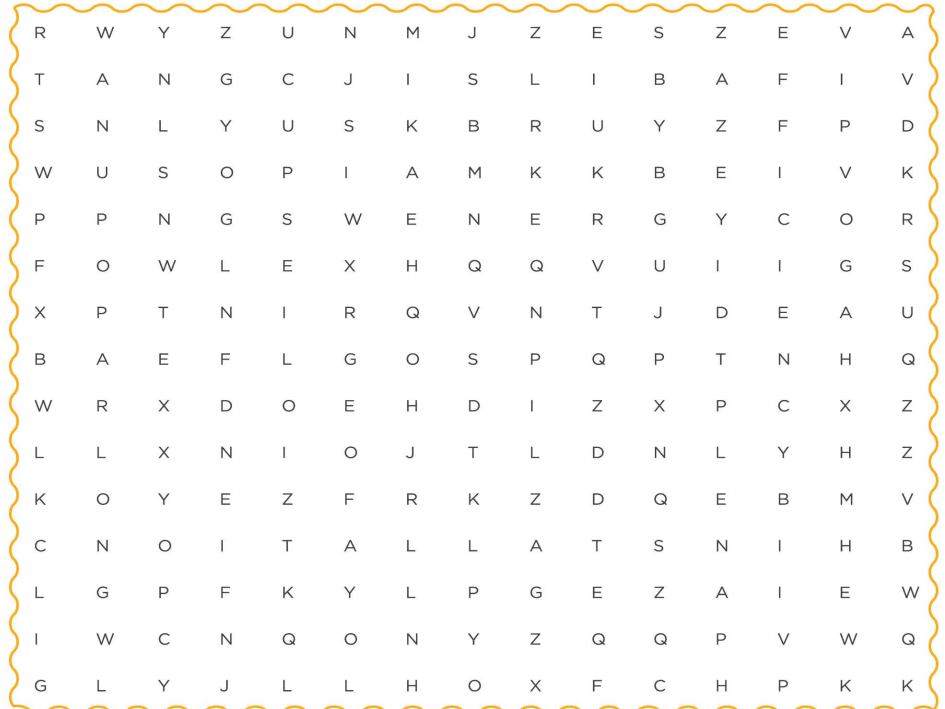
SOLAR ENERGY WORD SEARCH

Did you know solar panels turn sunlight into electricity? When the sun shines on the panels, tiny particles of light hit cells on the panels to create a flow of energy, like magic sunlight turning into power! The electricity then travels across power lines and can be used to light up homes, charge gadgets and more.

Can you find all the words associated with solar energy in the puzzle below?

WORD BANK

Solar Sunlight
Panel Efficiency
Renewable Installation
Energy Rooftop



OEC Quiz

Send in your completed quiz for your chance to win! Osceola Electric will draw 3 lucky members to receive \$10 credit towards their electric bill. Congratulations to last month's winners: Robert Groote, Barbara Laughlin, and Matt Benz.

- _____ scholarships were given away to students of Osceola Electric Cooperative members.
- Nominate a volunteer for the Shine the Light contest by June 30 and they could win \$_____ for their local charity or nonprofit.
- Look up for _____ while fishing or sailing.

Name: _____

Account #: _____

Operating Statistics

April	2024	2025
Billed consumers, farm	1,156	1,153
Billed consumers, non-farm and others	122	125
Kilowatts sold, farm	2,311,345	2,253,505
Kilowatts sold, non-farm and others	4,952,372	5,522,015
Average consumption, farm	1,999	1,954
Average Consumption, non-farm	40,593	44,176
Average statement, farm	\$241.48	\$246.92
Average statement, non-farm and others	\$3,403.23	\$3,432.71
Total minimum bills	23	21
Outage time per consumer—minutes	0	1/2
Energy efficiency added per KWH		.22
Annual Meeting	March 2026	